



Building Energy Modeling software

for busy consulting engineering firms

KEY TECHNOLOGIES:

- Unique 3D solid modeling environment
- Revit BIM integration
- Fully integrated CIE 171, 2006 compliant Daylight analysis with CBDM
- Natural ventilation & solar shading
- Component-based system & control modeling coupled to building simulation
- Space load sizing & HVAC system sizing
- Fully compliant with ASHRAE Standards & LEED credits
- 2-way link with Energy+ and import eQuest data (IDF/ INP)
- Open API for custom scripting & automation, along with built-in parametric analysis capabilities

TAS ENGINEERING:

- Comparable functionality to Energy+ with very much faster simulation run times
- Offers more capability and productivity than eQuest

Monthly subscription with full maintenance & support from \$330

Video and Workbook Training Material Included

(212) 957-5415

support@edsltas.com | www.edsltas.com

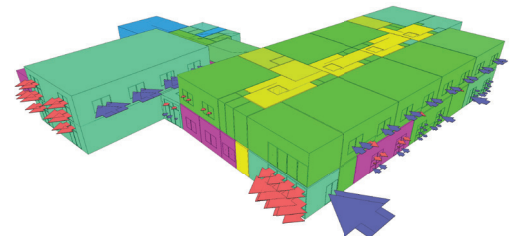
We fully migrated all of our new energy modeling work from eQuest to TAS in 2017. The modeling ranges from design support and scenario analysis, to the generation of documentation for LEED and efficiency incentive programs.

As expected, we have been able to simulate passive heating/cooling and daylighting features, as well as complex modern HVAC systems, such as central heat recovery chillers, active chilled beams, and spaces served by more than one HVAC system. Neither of these could have been modeled in a reliable fashion with eQuest.

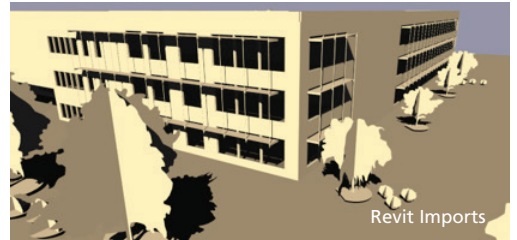
Further, the extensive analytical capabilities of TAS have enabled us not only to better QC our work, but to also analyze the impacts of various energy features on visual and thermal comfort, and HVAC system sizing.

We continue to appreciate the person-to-person support that's available, and enjoy the efficiency of generating the building enclosure.

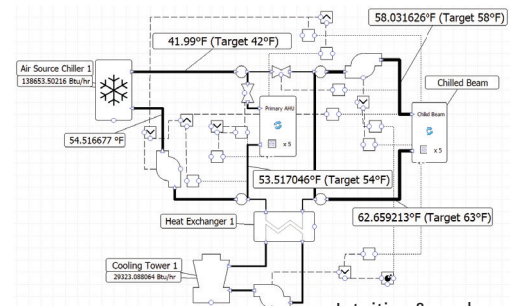
Peter Reppe, CPHC, LEED AP
SYSTEMS WEST ENGINEERS, INC.



NV Analysis – complex cross & displacement vent



Revit Imports



Intuitive & modern Systems interface



LEED & CBDM Daylighting



EDSL USA, INC. New York, NY 10019